

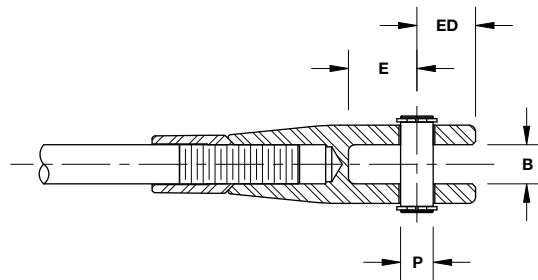
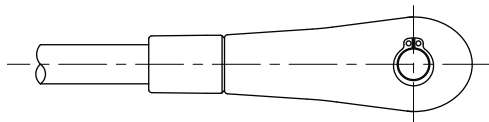


Jaw Assemblies for Steel Rods

TriPyramid's standard steel rods have a yield strength of 67 ksi (460 MPa), almost two times the yield strength of A36 structural steel, and 1/3 higher than Grade 50 steel. These rods offer a good balance of strength, stiffness and cost for structural tension rods.

Fittings are designed to provide the same aesthetic as TriPyramid's other threaded fittings, with the locknut also serving to cover the threads on the rod. Standard jaw fittings are designed and manufactured by our partners at Pfeifer in Germany. These are cast fittings, designed to be stronger than the rods they are attached to. Pfeifer fittings are tested and certified to the highest German standards.

Fittings and rods can be supplied either galvanized or bare, with a mill finish ready for blasting and painting.



Jaw Assemblies for Threaded Grade 460 Steel Rod

Jaw Part Number	Rod Diameter		Compatible Rod	Rod Breaking Strength kips (kN)	Pin Diameter (P)		Jaw Gap (B)		Throat Depth (E)		Edge Distance (ED)		Take Up		
	inch	(mm)			inch	(mm)	inch	(mm)	inch	(mm)	inch	(mm)	inch	(mm)	
B275-860-012	0.472	(12.0)	A70-012	11.4	(50.8)	0.43	(11.0)	0.47	(12.0)	0.83	(21.0)	0.71	(18.0)	0.47	(12.0)
B275-860-016	0.630	(16.0)	A70-016	21.3	(94.6)	0.55	(14.0)	0.59	(15.0)	1.18	(30.0)	1.02	(26.0)	0.91	(23.0)
B275-860-020	0.787	(20.0)	A70-020	33.2	(147.8)	0.63	(16.0)	0.71	(18.0)	1.38	(35.0)	1.22	(31.0)	1.14	(29.0)
B275-860-024	0.945	(24.0)	A70-024	47.8	(212.8)	0.87	(22.0)	0.91	(23.0)	1.81	(46.0)	1.54	(39.0)	1.38	(35.0)
B275-860-027	1.063	(27.0)	A70-027	62.4	(277.7)	0.94	(24.0)	0.91	(23.0)	1.85	(47.0)	1.73	(44.0)	1.57	(40.0)
B275-860-030	1.181	(30.0)	A70-030	76.2	(338.7)	1.10	(28.0)	1.10	(28.0)	2.05	(52.0)	2.01	(51.0)	1.69	(43.0)
B275-860-036	1.417	(36.0)	A70-036	111.0	(493.7)	1.26	(32.0)	1.10	(28.0)	2.52	(64.0)	2.28	(58.0)	2.05	(52.0)
B275-860-042	1.654	(42.0)	A70-042	152.4	(677.9)	1.42	(36.0)	1.30	(33.0)	2.76	(70.0)	2.60	(66.0)	2.40	(61.0)
B275-860-048	1.890	(48.0)	A70-048	200.3	(891.1)	1.57	(40.0)	1.50	(38.0)	3.07	(78.0)	2.91	(74.0)	2.68	(68.0)
B275-860-052	2.047	(52.0)	A70-052	239.2	(1064)	1.77	(45.0)	1.69	(43.0)	3.35	(85.0)	3.31	(84.0)	2.95	(75.0)
B275-860-056	2.205	(56.0)	A70-056	276.2	(1229)	1.97	(50.0)	1.69	(43.0)	3.74	(95.0)	3.58	(91.0)	3.23	(82.0)
B275-860-060	2.362	(60.0)	A70-060	321.6	(1430)	2.17	(55.0)	1.89	(48.0)	4.17	(106.0)	3.94	(100.0)	3.35	(85.0)
B275-860-064	2.520	(64.0)	A70-064	364.2	(1620)	2.17	(55.0)	2.09	(53.0)	4.21	(107.0)	4.06	(103.0)	3.50	(89.0)
B275-860-070	2.756	(70.0)	A70-070	443.3	(1972)	2.36	(60.0)	2.28	(58.0)	4.61	(117.0)	4.45	(113.0)	3.98	(101.0)
B275-860-080	3.150	(80.0)	A70-080	592.3	(2634)	2.76	(70.0)	2.68	(68.0)	5.24	(133.0)	5.20	(132.0)	4.57	(116.0)
B275-860-090	3.543	(90.0)	A70-090	762.8	(3393)	3.11	(79.0)	3.07	(78.0)	5.91	(150.0)	5.91	(150.0)	5.04	(128.0)
B275-860-100	3.937	(100.0)	A70-100	954.8	(4247)	3.50	(89.0)	3.27	(83.0)	6.69	(170.0)	6.50	(165.0)	5.55	(141.0)

Notes: Stock rod length 40'. Strengths noted are strength in threaded area. Fittings are for length adjustment, not for pretensioning. Fittings are all designed to be stronger than the corresponding TriPyramid Series A70 rod. Custom adjustable eye assemblies are also available.