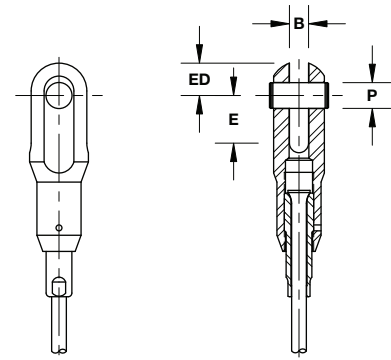


**Jaw Assemblies for Medium Strength Headed Rod**

Fittings for the A22 range of rods are attached by cold heading the rods. Adjustment of these fittings is provided by the threaded bushing (nose) that is captured by the head on the end of the rod. The bushing is free to rotate about the rod, threading into or out of the fitting to provide length adjustment. Threads are always concealed. Fixed jaw assemblies, also attached by cold heading the rod, are appropriate if no adjustment is required.



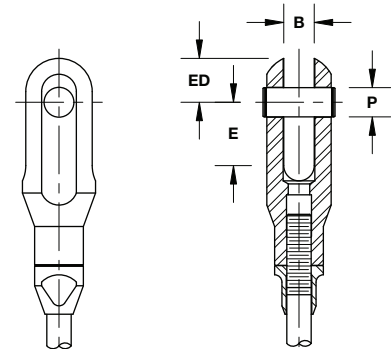
**Jaw Assemblies for Medium Strength Headed Rod**

Jaw Part Number	Rod Diameter		Compatible Rod	Rod Breaking Strength		Pin Diameter (P)		Jaw Gap (B)		Throat Depth (E)		Edge Distance (ED)		Take Up	
	inch	(mm)		kips	(kN)	inch	(mm)	inch	(mm)	inch	(mm)	inch	(mm)	inch	(mm)
<b>B215-0188</b>	0.188	(4.8)	<b>A22-0188</b>	3.8	(16.9)	0.31	(8.0)	0.28	(7.1)	0.58	(14.7)	0.44	(11.1)	0.75	(19.1)
<b>B215-0225</b>	0.225	(5.7)	<b>A22-0225</b>	5.5	(24.5)	0.38	(9.5)	0.28	(7.1)	0.69	(17.5)	0.50	(12.7)	0.75	(19.1)
<b>B215-0250</b>	0.250	(6.4)	<b>A22-0250</b>	6.8	(30.2)	0.50	(12.7)	0.40	(10.2)	0.92	(23.4)	0.63	(15.9)	1.00	(25.4)
<b>B215-0330</b>	0.330	(8.4)	<b>A22-0330</b>	11.9	(52.9)	0.56	(14.3)	0.40	(10.2)	1.04	(26.4)	0.65	(16.5)	1.00	(25.4)
<b>B215-0375</b>	0.375	(9.5)	<b>A22-0375</b>	15.4	(68.5)	0.63	(15.9)	0.53	(13.5)	1.16	(29.4)	0.75	(19.1)	1.25	(31.8)
<b>B215-0437</b>	0.437	(11.1)	<b>A22-0437</b>	20.0	(89.0)	0.75	(19.1)	0.53	(13.5)	1.39	(35.3)	0.88	(22.2)	1.25	(31.8)
<b>B215-0500</b>	0.500	(12.7)	<b>A22-0500</b>	27.5	(122.3)	0.88	(22.2)	0.65	(16.5)	1.62	(41.1)	1.10	(27.9)	1.25	(31.8)
<b>B215-0625</b>	0.625	(15.9)	<b>A22-0625</b>	42.0	(186.8)	1.13	(28.6)	0.78	(19.8)	2.08	(52.9)	1.50	(38.1)	1.75	(44.5)

Notes: Material is type 304 stainless steel with a brushed finish. Stock rod length 32". If pretensioning of more than 200 pounds is required, special rotating bearings can be incorporated within the adjustable noses. Fittings are all designed to be stronger than the corresponding TriPyramid Series A22 rod. Other materials and finishes, and custom pin, gap and edge distances are readily available on a custom basis. Custom adjustable eye assemblies are also available. Dimensions for fixed jaws are the same as those shown in the table above for adjustable jaws, except that fixed jaws have no take-up.

**Jaw Assemblies for Medium Strength Heat Treated Threaded Rod**

Fittings for the A25 range of rods are attached by threading the rod. Special lock nuts cover the threads to give a smooth, clean appearance. These fittings are designed to provide length adjustment, not pretensioning. Fittings are made from the same material as the rods themselves, to keep fitting size as small as possible. Standard finish is brushed.



**Jaw Assemblies for Medium Strength Threaded Rod**

Jaw Part Number	Rod Diameter		Compatible Rod	Rod Breaking Strength		Pin Diameter (P)		Jaw Gap (B)		Throat Depth (E)		Edge Distance (ED)		Take Up	
	inch	(mm)		kips	(kN)	inch	(mm)	inch	(mm)	inch	(mm)	inch	(mm)	inch	(mm)
<b>B230-0750</b>	0.750	(19.1)	<b>A25-0750</b>	50.0	(222.4)	1.00	(25.4)	1.06	(27.0)	2.00	(50.8)	1.50	(38.1)	1.50	(38.1)
<b>B230-0875</b>	0.875	(22.2)	<b>A25-0875</b>	68.5	(304.7)	1.13	(28.6)	1.31	(33.3)	2.25	(57.2)	1.69	(42.9)	1.50	(38.1)
<b>B230-1000</b>	1.000	(25.4)	<b>A25-1000</b>	81.8	(363.9)	1.25	(31.8)	1.31	(33.3)	2.75	(69.9)	1.88	(47.6)	1.75	(44.5)
<b>B230-1125</b>	1.125	(28.6)	<b>A25-1125</b>	103.0	(458.2)	1.38	(34.9)	1.56	(39.7)	3.13	(79.4)	2.06	(52.4)	1.75	(44.5)
<b>B230-1250</b>	1.250	(31.8)	<b>A25-1250</b>	130.8	(581.8)	1.50	(38.1)	1.56	(39.7)	3.25	(82.6)	2.25	(57.2)	2.00	(50.8)
<b>B230-1375</b>	1.375	(34.9)	<b>A25-1375</b>	166.5	(740.6)	1.75	(44.5)	1.81	(46.0)	3.50	(88.9)	2.63	(66.7)	2.00	(50.8)
<b>B230-1500</b>	1.500	(38.1)	<b>A25-1500</b>	201.0	(894.1)	2.00	(50.8)	2.06	(52.4)	4.00	(101.6)	3.00	(76.2)	2.50	(63.5)
<b>B230-1750</b>	1.750	(44.5)	<b>A25-1750</b>	281.0	(1250)	2.25	(57.2)	2.06	(52.4)	5.00	(127.0)	3.38	(85.7)	2.50	(63.5)
<b>B230-2000</b>	2.000	(50.8)	<b>A25-2000</b>	374.0	(1664)	2.50	(63.5)	2.56	(65.1)	5.50	(139.7)	3.85	(97.8)	2.50	(63.5)

Notes: Stock rod length 20". Larger sizes, for rods up to 4" in diameter, are available on a custom basis. Strengths noted are strength in threaded area. Fittings are all designed to be stronger than the corresponding TriPyramid Series A25 rod. Other materials and finishes, and custom pin, gap and edge distances, are readily available on a custom basis. Custom adjustable eye assemblies are also available.